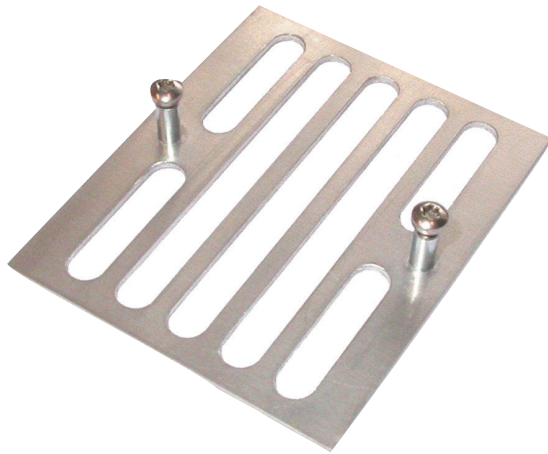




# LBB 4446/00 Set of Supervision Board Brackets (10 pcs)



The supervision board brackets are intended for mounting LBB 4442/00 Supervision Slave Boards, LBB 4441/00 Loudspeaker Supervision Boards and LBB 4443/00 EOL Supervision Boards into or onto loudspeaker cabinets, or into junction boxes and equipment racks.

## Parts Included

| Quantity | Component                  |
|----------|----------------------------|
| 10       | Supervision Board Brackets |

## Ordering Information

|  |                    |
|--|--------------------|
| <b>LBB 4446/00 Set of Supervision Board Brackets (10 pcs)</b><br>intended for mounting supervision boards. | <b>LBB 4446/00</b> |
|--|--------------------|

## Accessories

|   |                   |
|---|-------------------|
| <b>LBB 4441/00 Loudspeaker Supervision Board</b><br>monitors the integrity of a loudspeaker | <b>LBB4441/00</b> |
|---|-------------------|

|  |                   |
|--|-------------------|
| <b>LBB 4442/00 Line Supervision Set</b><br>contains the master and slave device for supervision of a single loudspeaker line | <b>LBB4442/00</b> |
|--|-------------------|

|  |                   |
|--|-------------------|
| <b>LBB 4443/00 End of Line (EOL) Supervision Board</b><br>monitors the integrity of a loudspeaker line | <b>LBB4443/00</b> |
|--|-------------------|

**Americas:**

Bosch Communications Systems  
12000 Portland Avenue South  
Burnsville, Minnesota 55337, USA  
Phone: +1-800-392-3497  
Fax: +1-800-955-6831  
audiosupport@us.bosch.com  
www.boschsecurity.com

**Europe, Middle East, Africa:**

Bosch Security Systems B.V.  
P.O. Box 80002  
5600 JB Eindhoven, The Netherlands  
Phone: +31 40 2577 284  
Fax: +31 40 2577 330  
emea.securitysystems@bosch.com  
www.boschsecurity.com

**Asia-Pacific:**

Robert Bosch (SEA) Pte Ltd  
11 Bishan Street 21  
Singapore 573943  
Phone: +65 6571 2600  
Fax: +65 6571 2698  
apr.securitysystems@bosch.com  
www.boschsecurity.com

**Represented by**